



10/30/2020 Job Packet

www.clearwaterweedremoval.com



Pond 1 Close to Club House

- Observation
- Thick mats of southern cut grass entangled on creeping burhead in the north east channel, and extensive mats of vegetation extending towards middle of the pond from all shorelines.



Pond 1 Close to Club House

- Areal Study of affected zones
- Pond Area
- 2 Acres
- Area affected
- .75 Acres
- Percent of pond covered
- 37.5%



Pond 1 Close to Club House

- Post Cleanup
- Clean up time was 7 hrs
- The picture was taken 2 hours before completion and the machine can be seen cleaning out the last of the north east channel.
- Water clarity should be back in 1-2 days after mud settles



Pond 2 South East of property

- Observation
 - Thick growth of creeping burhead along all of the shores extending 6-15 ft into the middle of the pond.

Also large growth of baby pond weed in the middle of the pond breaking the surface.



Pond 2 South East of property

- Areal Study of affected zone

Pond Area

2.9 Acres

Area affected

1.2 Acres — Not counting the growth
in the middle of the pond

Percent

41.3%

Estimated clean

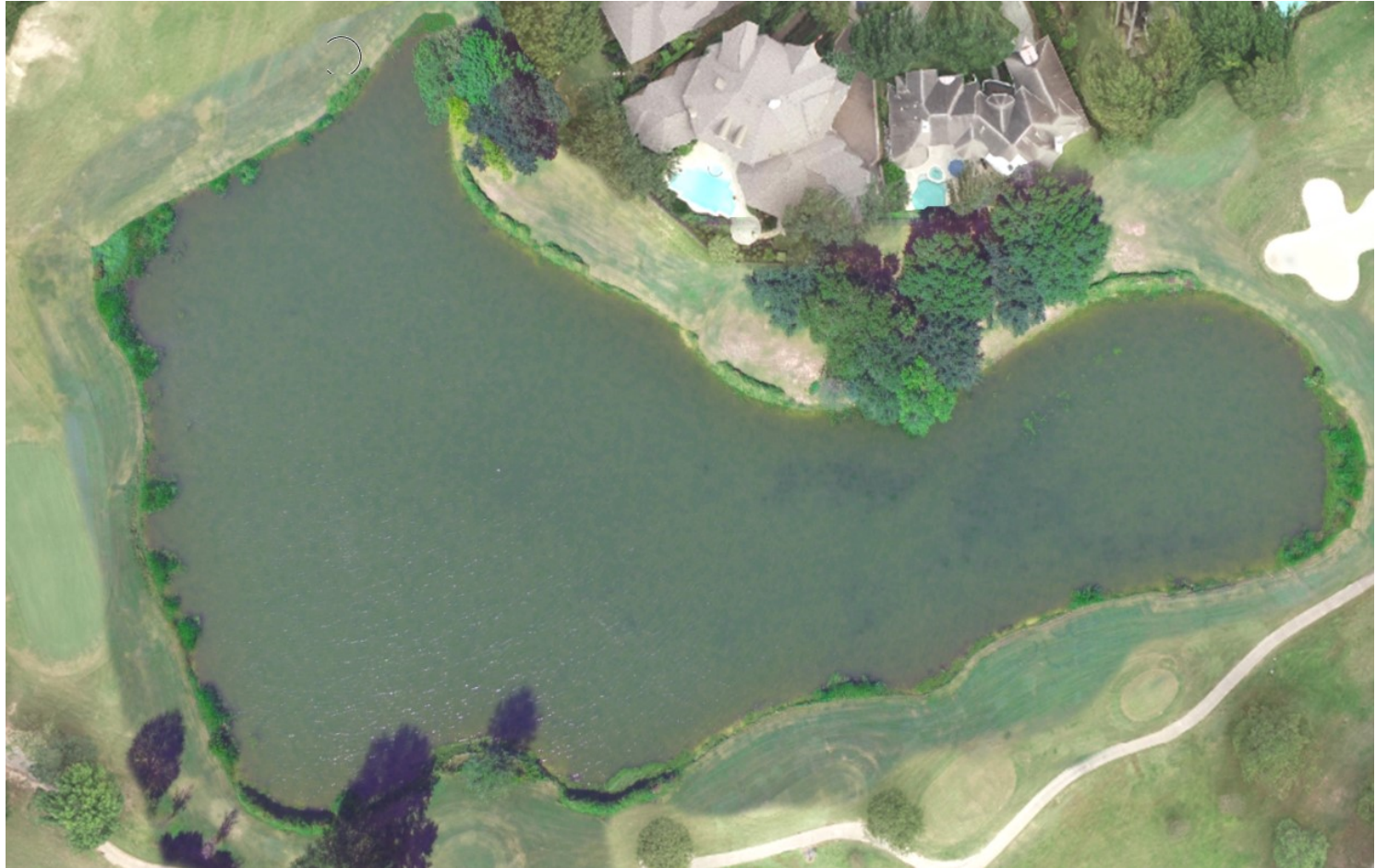
up time

9 hrs



Pond 2 South East of property

- Post Cleanup
- Clean up time took 14 hrs
- There were some areas of brush and cattails that were left on the banks for esthetics purpose. Also a few areas in the middle still need to be removed, but the bulk of the 1.2 Acres was removed and left in easily accessible piles around the pond.



Recommendations

Continued mechanical removal of vegetation in the middle of pond 2

Addition of Tilapia in the Spring or Grass Carp to help keep weeds in control.

Addition of Lake dye, 50% black-50% blue to reduce light penetration especially in pond #2